

METROPOLITAN ATLANTA RAPID TRANSIT AUTHORITY



CLAYTON COUNTY HIGH CAPACITY TRANSIT UPDATE

Technical Advisory Committee
October 25, 2016

Agenda

- Welcome/Introductions
- Project Overview
- Roles and Responsibilities
- Baseline Conditions
- Key Findings
- Questions
- Group Exercise
- Next Steps

PROJECT OVERVIEW

Project Background

- C-TRAN started serving Clayton County in 2001
- Service discontinued in March 2010 due to lack of funding
- Continued need for transit to access jobs and services
- Connectivity to regional transit system
- Promote more economic development opportunities



Previous Studies

- Countywide Comprehensive Transportation Plans (CTPs)
- Transit Service Plans
- City Comprehensive Plans
- Livable Centers Initiative (LCI) Studies
- *Clayton Extension Report* (June 2014)
- *Clayton County High Capacity Transit – Conceptual Planning Technical Memorandum* (September 2014)
- *Clayton County Transit Service Plan* (April 2015)

Clayton County Tax Referendum

- Approved on November 4, 2014
- One-cent sales tax to extend MARTA into the County including:
 - Bus
 - Paratransit (Mobility)
 - High Capacity Transit Service
- Bus service started in March 2015
- High Capacity Transit to be implemented in the future

Existing Transit Service

- MARTA Bus Service
 - 9 local routes serving Clayton County
 - 16,200 average daily boardings
 - Connections to MARTA Rail at College Park and East Point stations

- GRTA Xpress Service
 - 6 express routes connecting commuters to Downtown/Midtown Atlanta
 - 2,300 average daily boardings



High Capacity Transit Initiative

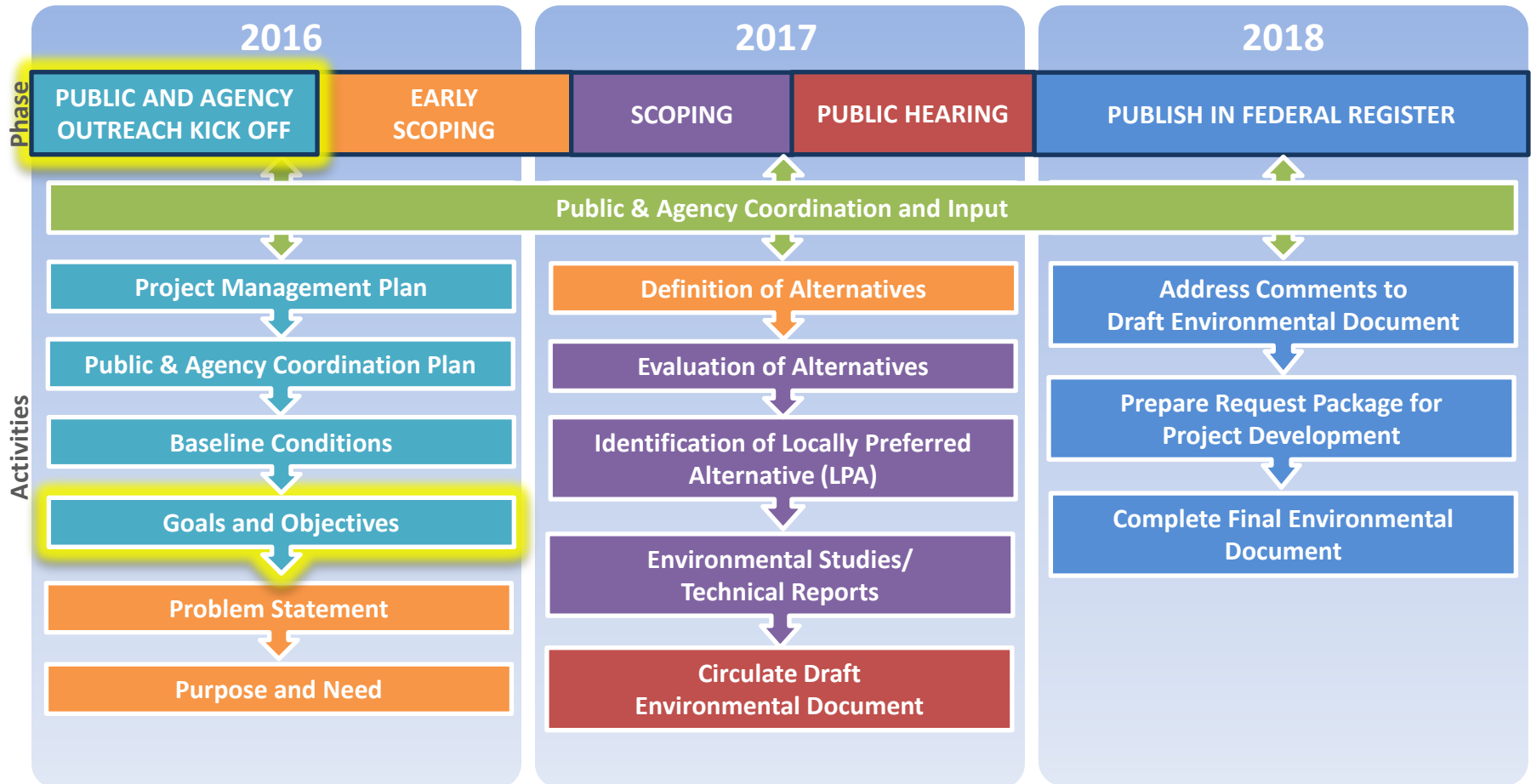
- Study Purpose:
 - Analyze and evaluate a range of potential high capacity transit corridors
 - Determine a Locally Preferred Alternative (LPA)
 - Conduct environmental planning to enter into Project Development
- Deliverables:
 - Draft and Final Environmental Documents
- Schedule:
 - Study completion in 2018
 - Prepare for future phases of implementation (final design, construction)

What is High Capacity Service?

- High Capacity service features include:
 - Fixed-guideway/exclusive lanes
 - Larger transit vehicles
 - Fewer transit stops
 - More frequent service
 - Higher travel speeds
 - New transit stations with passenger amenities
- Transit technologies include:
 - Heavy rail transit (HRT)
 - Commuter rail transit (CRT)
 - Light rail transit (LRT)
 - Bus rapid transit (BRT)



Project Schedule



Public and Agency Coordination

- Communication Tools:
 - Project Identity/Logo
 - Project Website
 - Print and Electronic Media
- Public Outreach Tools:
 - Public Meetings and Hearings
 - Alignment Tours and Community Events
- Stakeholder/Agency Coordination:
 - Technical Advisory Committee (TAC)
 - Stakeholder Advisory Committee (SAC)
 - Citizens Advisory Group (CAG)



Roles and Responsibilities

Technical Advisory Committee

- Represent agency's interest and disseminate project information
- Review technical data and analysis
- Provide input and guidance to project team
- Meet six times during the process at key milestones



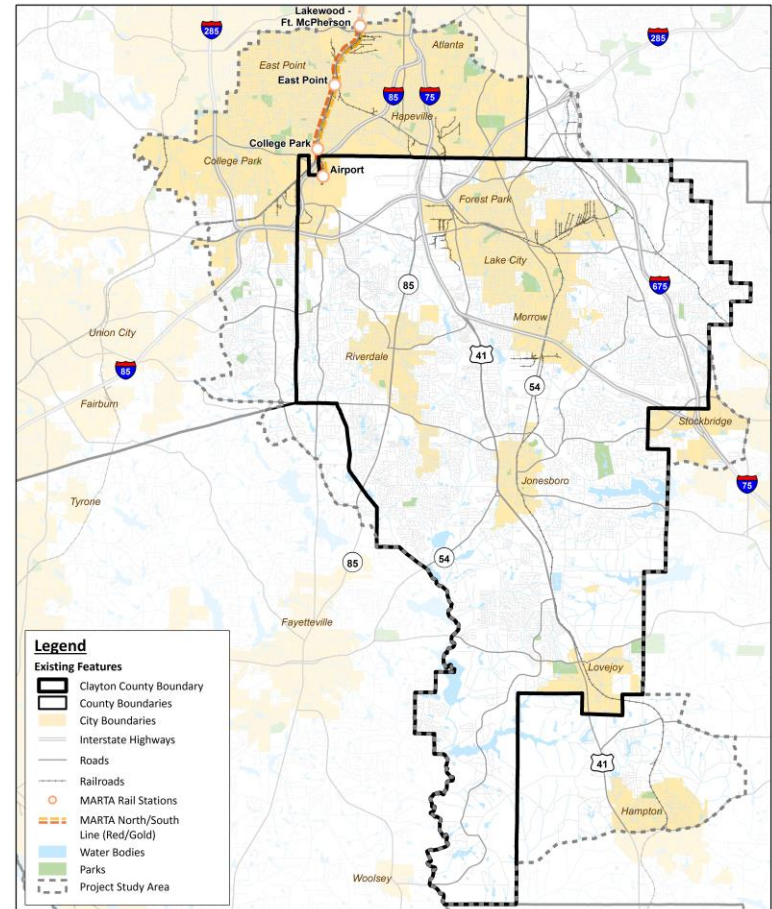
Baseline Conditions

Purpose

- Collect existing and future conditions data
 - Population and employment
 - Socioeconomic demographics
 - Land use and development patterns
 - Economic development activity and trends
 - Transportation system performance and travel trends
- Data will help:
 - Identify study goals and objectives
 - Determine purpose and need

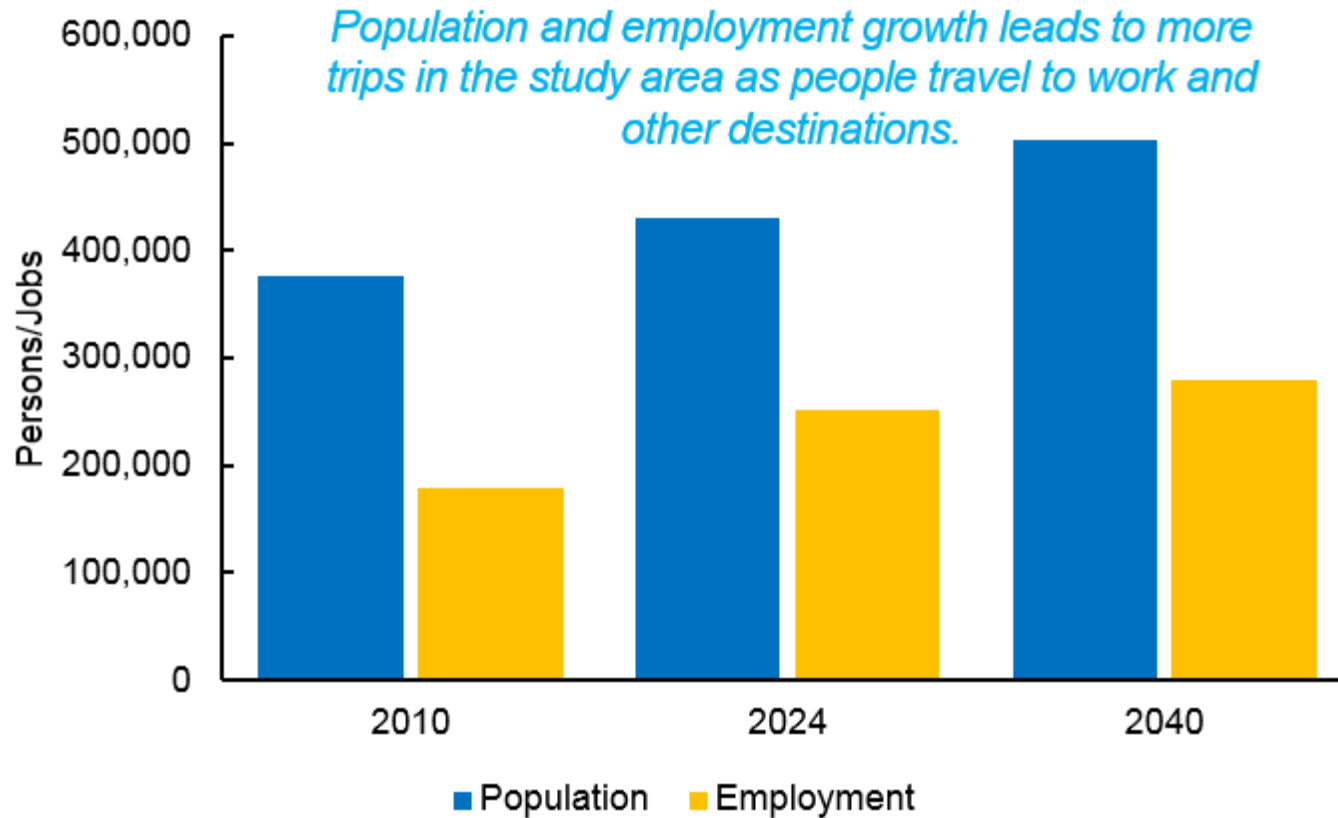
Study Area

- Incorporated and unincorporated Clayton County
- Portions of DeKalb, Fayette, Fulton, and Henry Counties
- Cities of Atlanta, College Park, East Point, and Hapeville

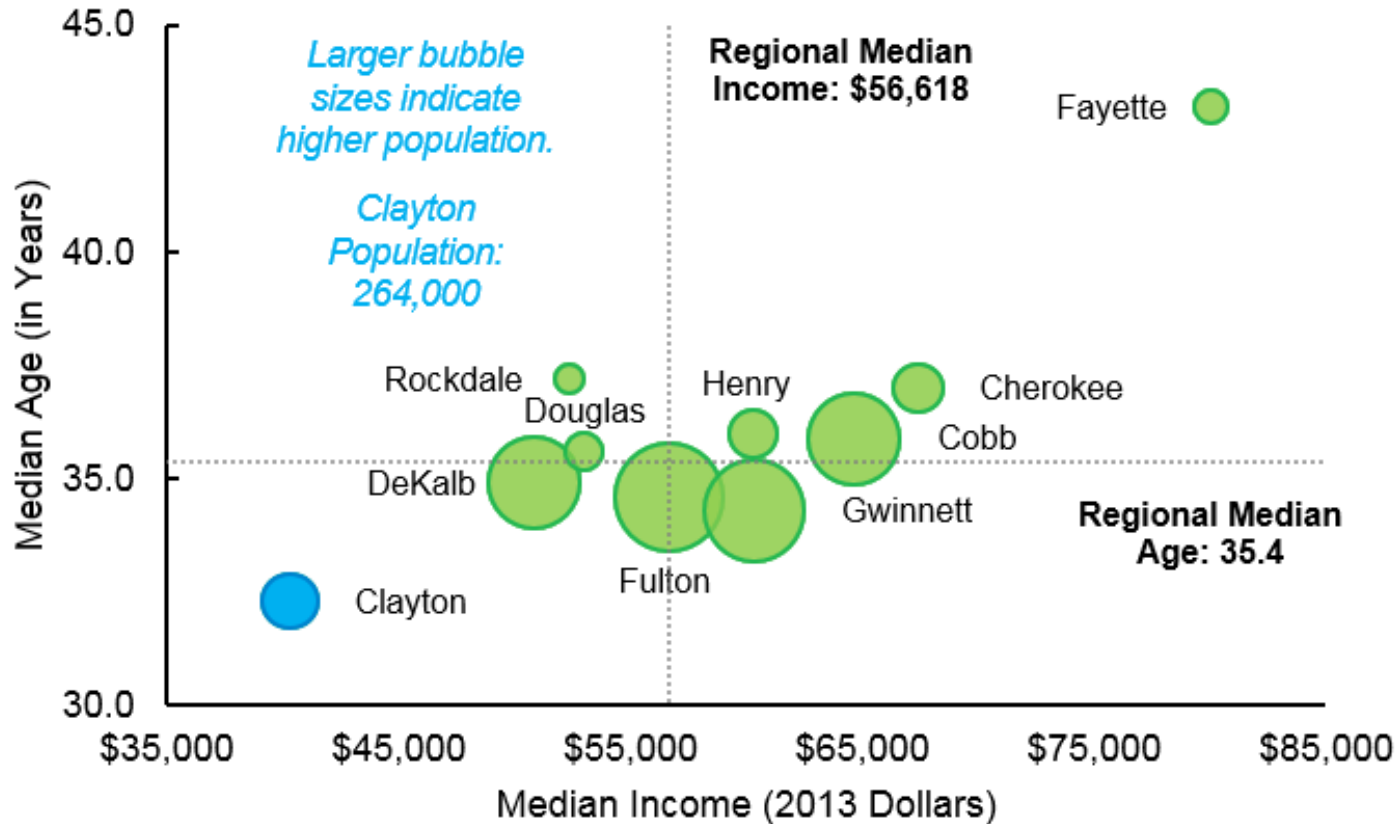


Key Findings

Socioeconomic/Demographics

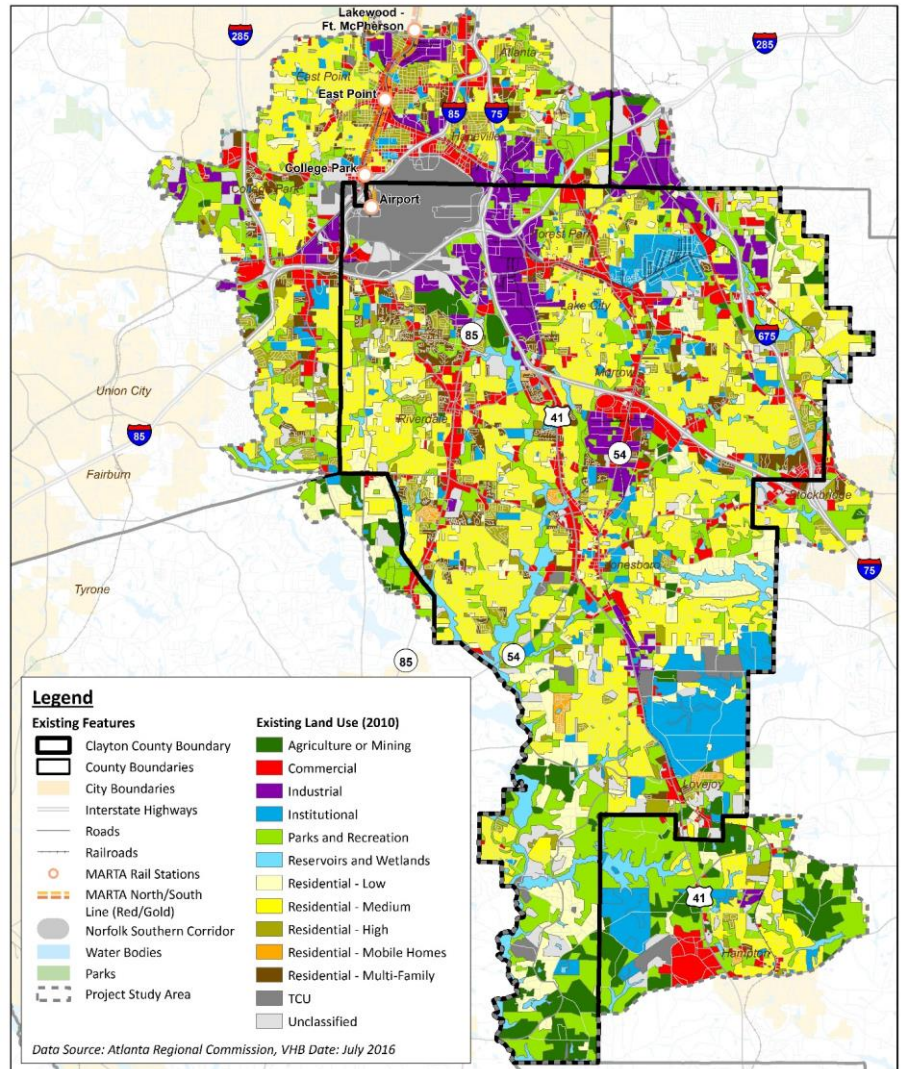


Socioeconomic/Demographics



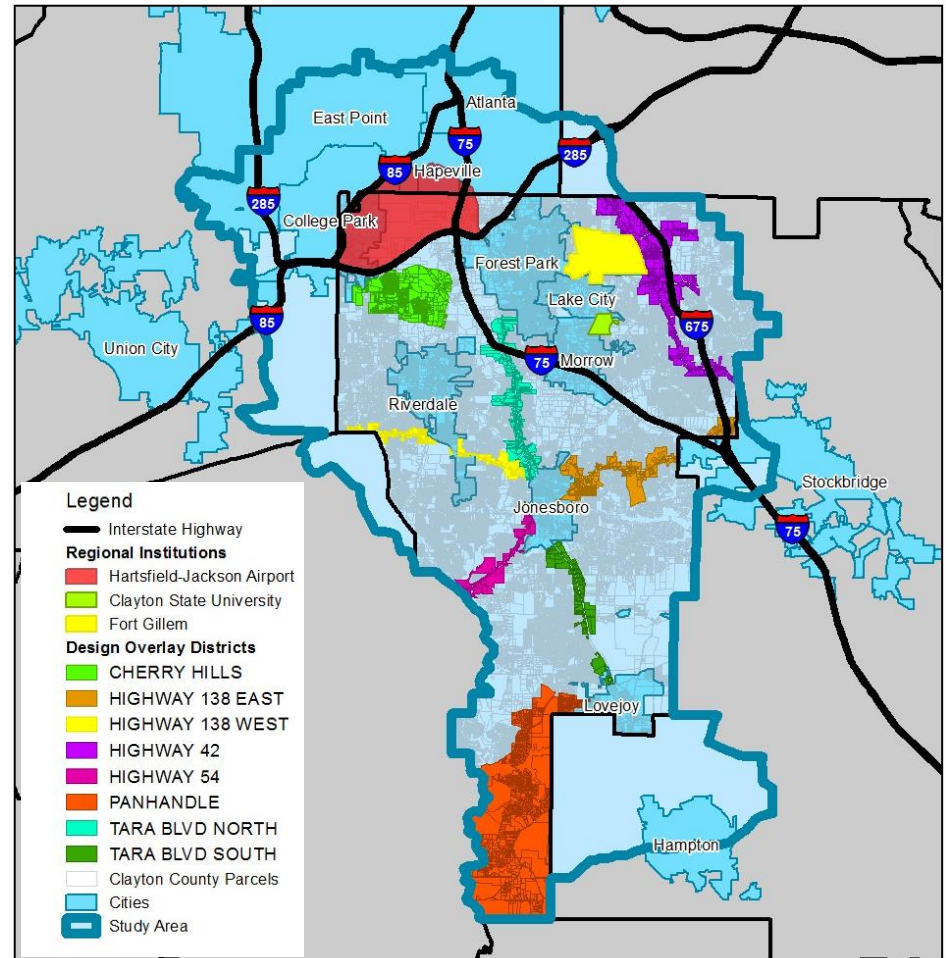
Land Use/ Development

- Mostly low to medium density residential
- Transit supportive land uses and design elements at existing town centers
- Most development occurring in northern portion of study area



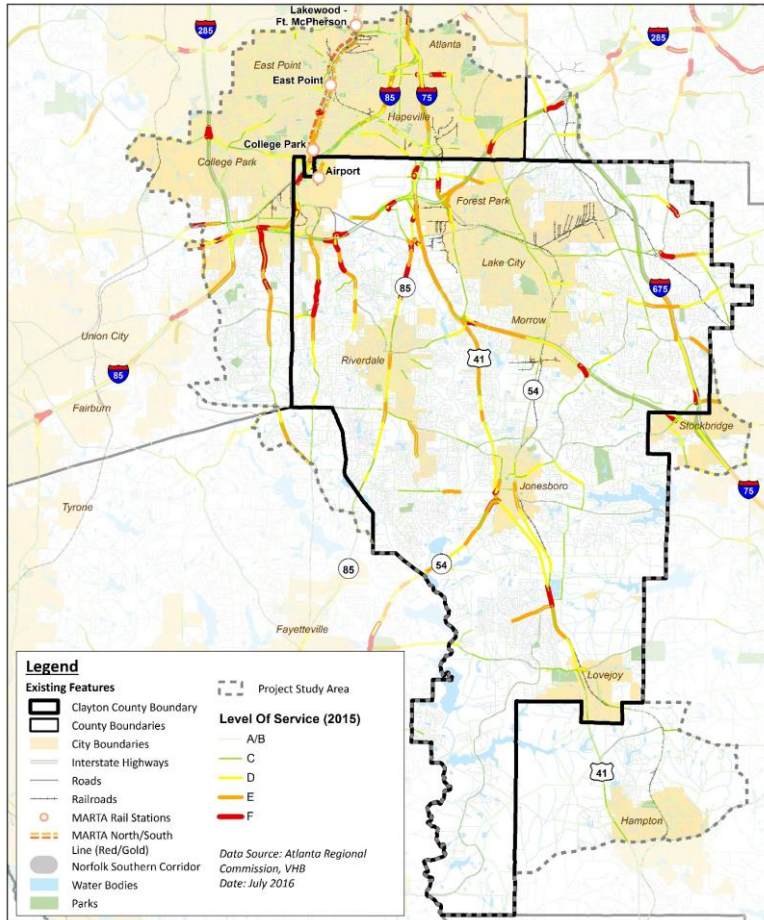
Economic Development

- Town Centers
- Fort Gillem
- South Lake Mall/Mt. Zion
- Aerotropolis
- Clayton State University
- Market sector growth targeted:
 - Manufacturing
 - Aerospace & Aviation
 - Logistics/Transportation
 - Bio/Life & Health Services

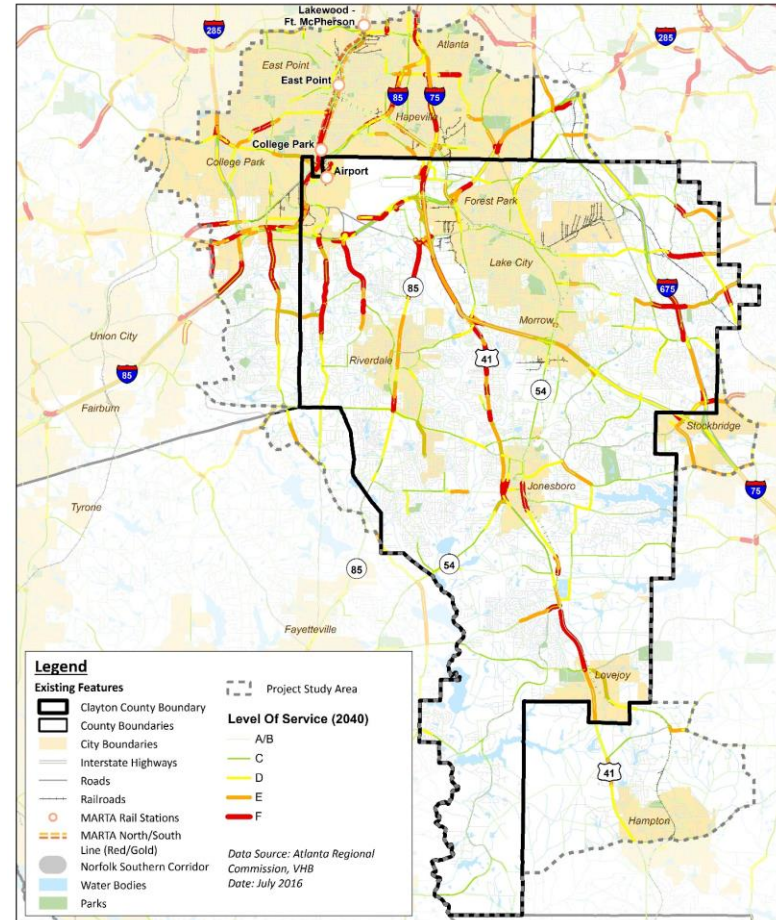


Transportation System

Existing (2015) – Roadway LOS

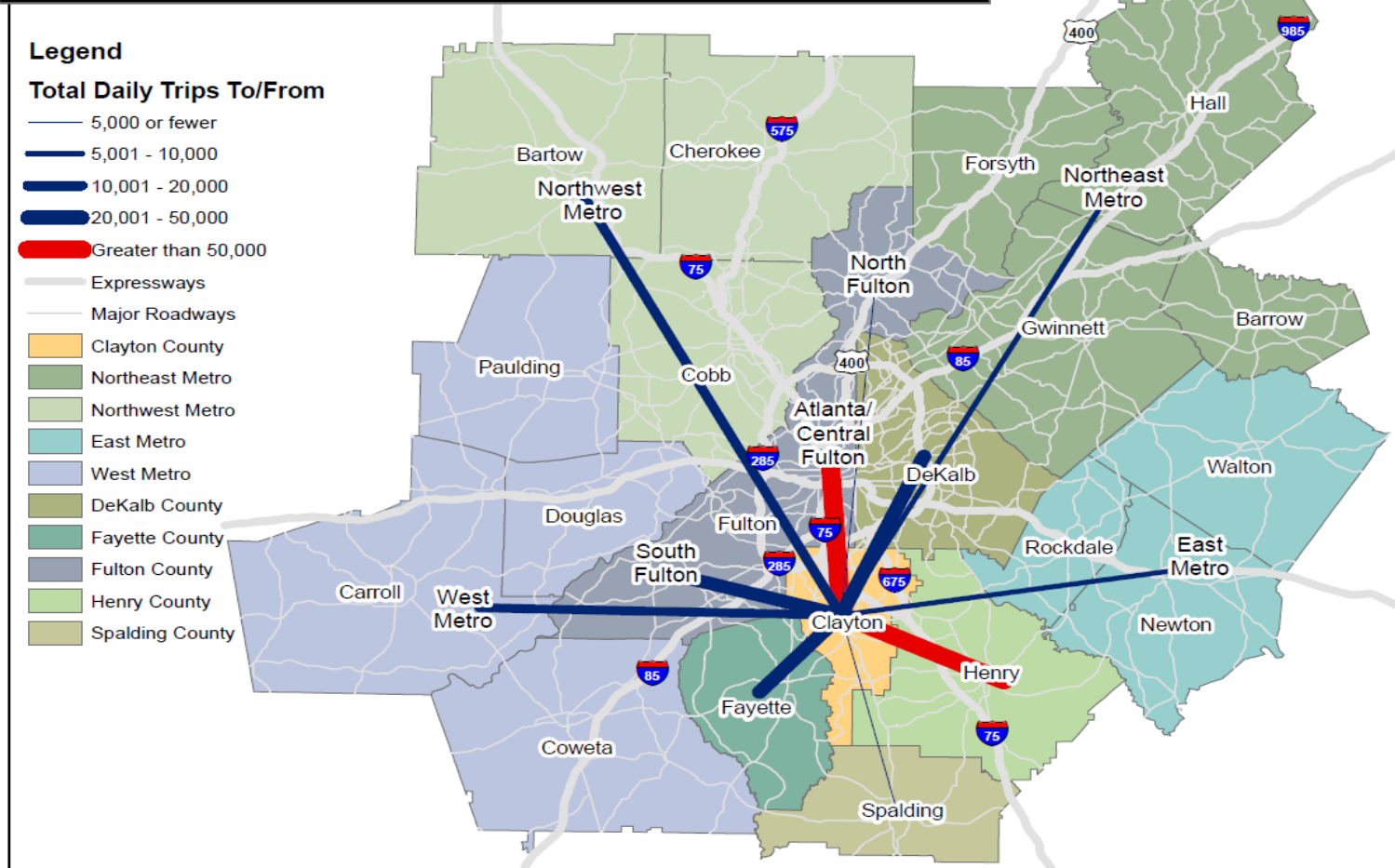


Future (2040) – Roadway LOS

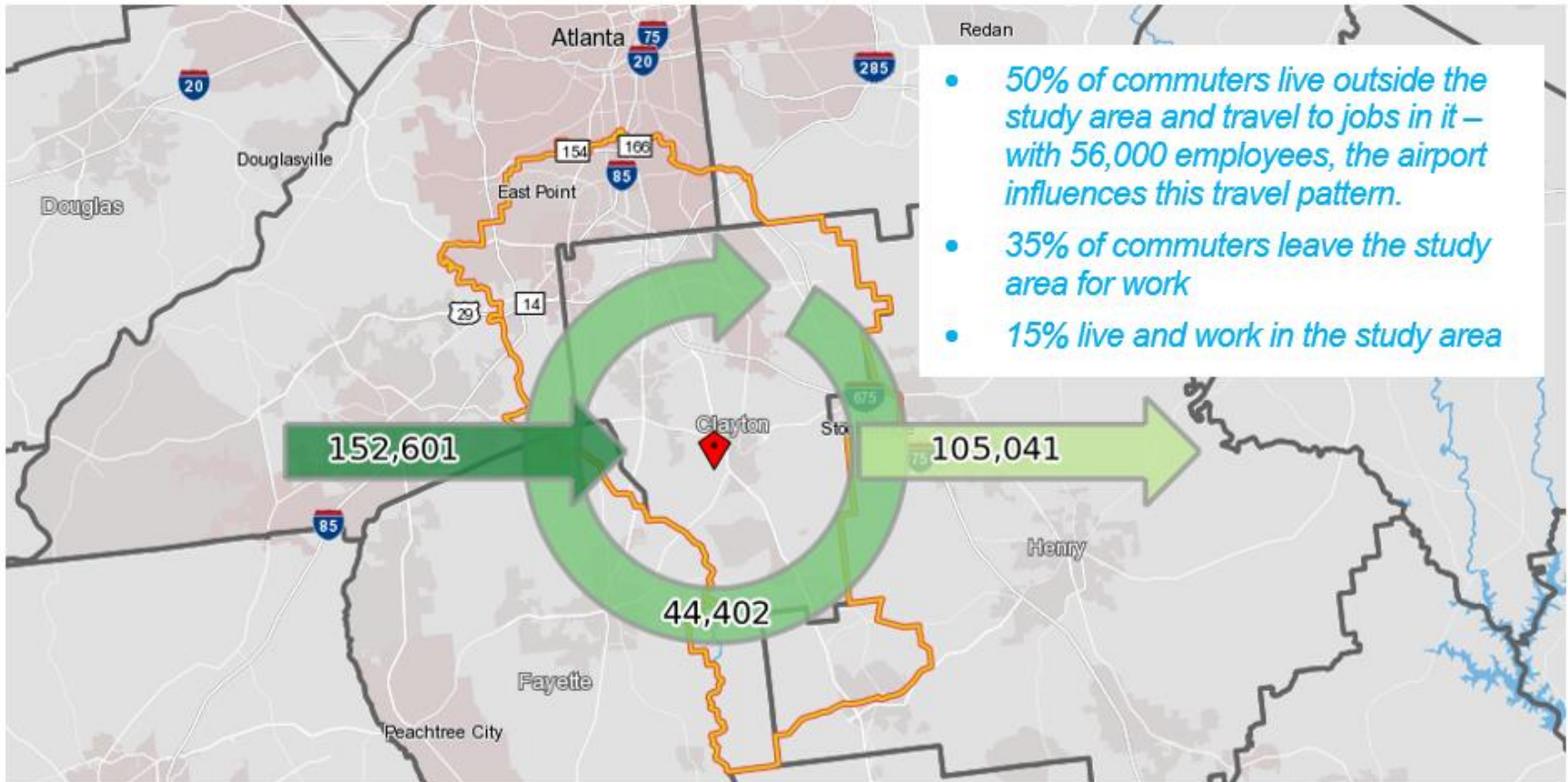


Travel Trends

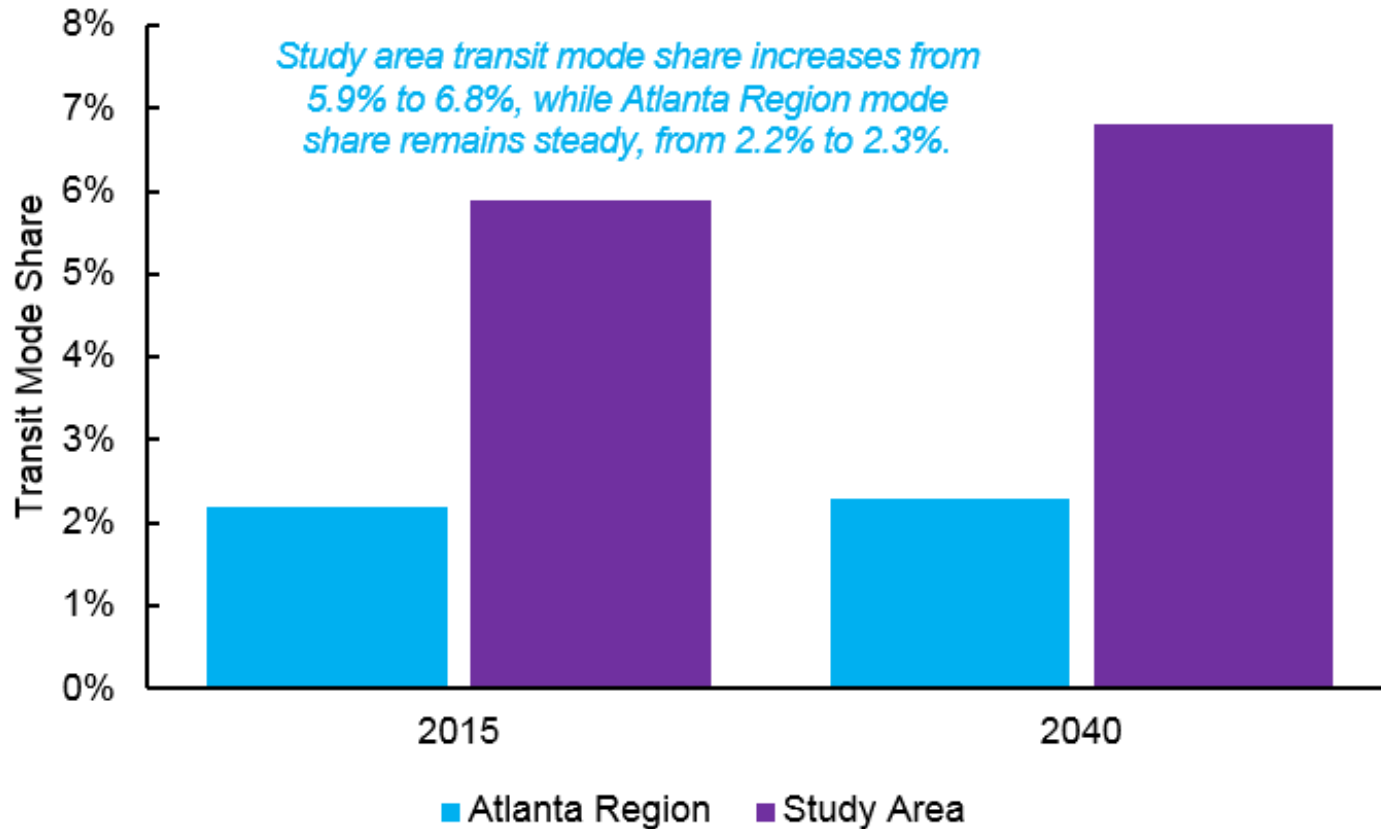
Regional Daily Trips to/from Clayton County



Travel Trends



Travel Trends



Summary of Key Themes

- Continued population and employment growth
- Increased demand on transportation networks to access jobs
- Increased traffic congestion - Tara Blvd, SR85, SR54, SR138 & I-75
- Growing demand for transit for local and regional trips
- Transit supportive development is needed along major corridors
- Most development activity occurring in northern half of County

Questions?



Group Exercise

Group Exercise

- How satisfied are you with the current MARTA and GRTA transit service frequency in the study area?
 1. Not at all satisfied
 2. Unsatisfied
 3. Neutral
 4. Satisfied
 5. Very satisfied

Group Exercise

- How satisfied are you with the current MARTA and GRTA transit coverage in the study area?
 1. Not at all satisfied
 2. Unsatisfied
 3. Neutral
 4. Satisfied
 5. Very satisfied

Group Exercise

- What are the most important major corridors for improved transit service (choose the top 3)?
 1. US 19/41 (Tara Boulevard)
 2. US 23 (Moreland Avenue)
 3. SR 54 (Jonesboro Road)
 4. SR 85
 5. SR 138
 6. SR 139 (Riverdale Road)
 7. SR 331 (Forest Parkway)

Group Exercise

- What do you see as the major destinations in the study area (choose the top 3)?
 1. Hartsfield-Jackson Atlanta International Airport
 2. Gillem Logistics Center (Old Fort Gillem)
 3. Southlake Mall
 4. Forest Park
 5. Lake City
 6. Morrow
 7. Riverdale
 8. Jonesboro
 9. Lovejoy

Group Exercise

- What do you see as the major destinations in the region (choose the top 3)?
 1. Downtown Atlanta
 2. Midtown Atlanta
 3. Buckhead
 4. Perimeter Center
 5. Fayetteville
 6. McDonough
 7. Stockbridge
 8. Northlake/Tucker
 9. Emory/Decatur

Group Exercise

- What is the most important characteristic of transit to you (choose the top two)?
 1. Service that is consistently on-time
 2. Frequent service
 3. Extensive coverage
 4. Shorter trip time
 5. Real time data (at stops and on a mobile app)
 6. Amenities (shelters, benches, trash cans, etc.)

Group Exercise

- What are the major constraints within the study area?

Group Exercise

- Are you aware of any upcoming/planned developments that might affect the study?

Next Steps

Next Steps

- Conduct Kick Off Public Meetings
 - November 10, 2016 – 6:00 p.m.- 8:00 p.m.
Riverdale Town Center
 - November 17, 2016 – 6:00 p.m.- 8:00 p.m.
Clayton State University
- Continue public and corridor stakeholder outreach
- Continue data collection and analysis
- Develop Purpose and Need